

FED. ROAD DIST. NO.	STATE	PROJ. NO.	FISCAL YEAR	SHEET NO.	TOTAL SHEETS
	OKLA.				

DESCRIPTION	REVISIONS	DATE

SECTION CORNER - O.D.O.T. D-22-490
 FOUND AND ACCEPTED A #4 BAR WITH "CA 980" CAP.
 LOCATION IS IN AGREEMENT WITH OKLAHOMA CERTIFIED
 CORNER RECORD FILED IN 2010 AND IS IN HARMONY
 WITH EXISTING IMPROVEMENTS. THE REFERENCE
 MONUMENTS WERE FOUND AND VERIFIED.

SECTION CORNER - O.D.O.T. D-22-494
 FOUND AND ACCEPTED A #4 BAR WITH "CA 980" CAP.
 LOCATION IS IN AGREEMENT WITH OKLAHOMA CERTIFIED
 CORNER RECORD FILED IN 2004 AND IS IN HARMONY
 WITH EXISTING IMPROVEMENTS. THE REFERENCE
 MONUMENTS WERE FOUND AND VERIFIED.

SECTION CORNER - O.D.O.T. D-22-498
 FOUND AND ACCEPTED A #4 BAR WITH "CA 980" CAP.
 LOCATION IS IN AGREEMENT WITH OKLAHOMA CERTIFIED
 CORNER RECORDS FILED IN 2004 AND IS IN HARMONY
 WITH EXISTING IMPROVEMENTS. THREE OF THE
 REFERENCE MONUMENTS WERE FOUND AND VERIFIED.

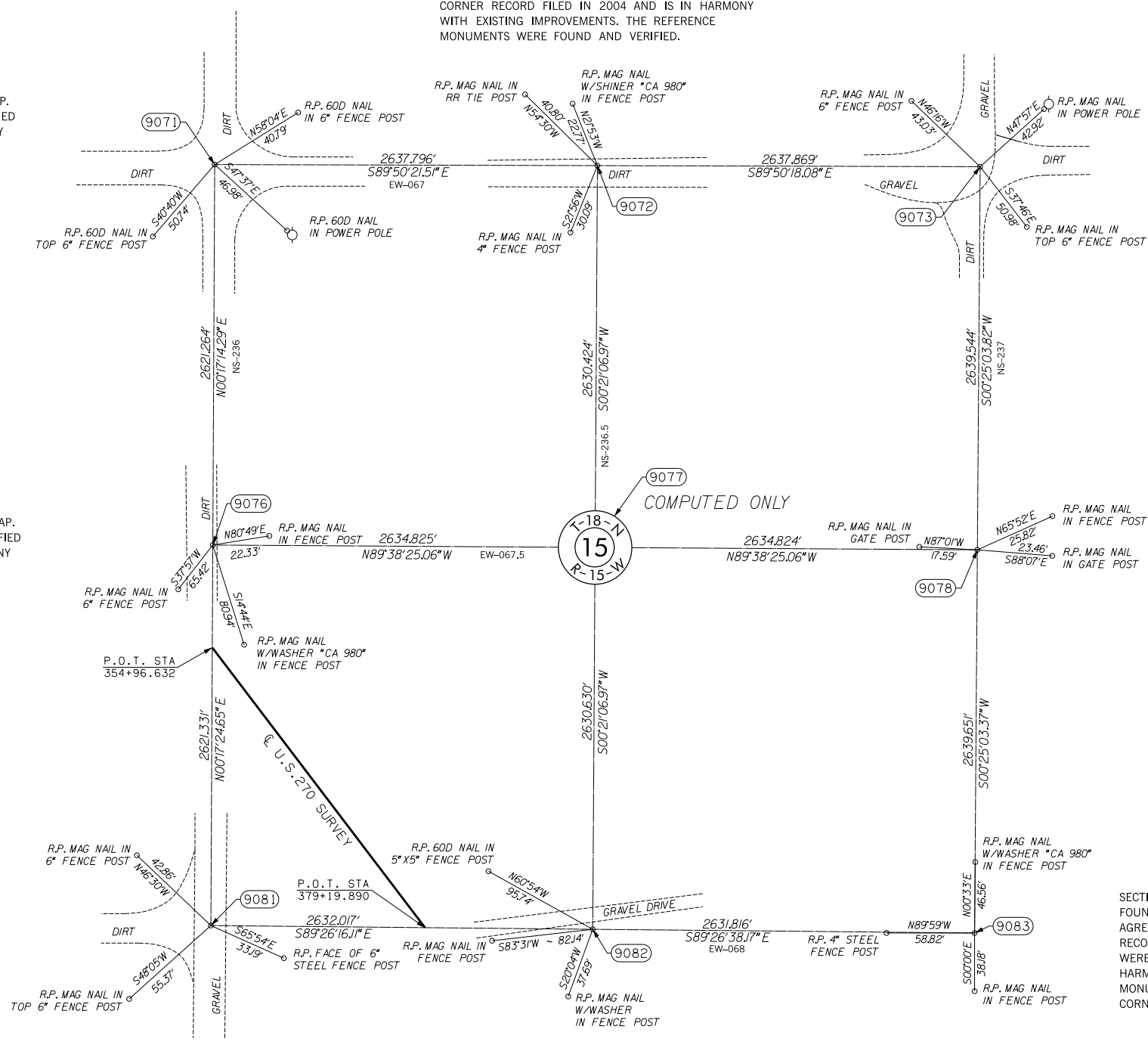
SECTION CORNER - O.D.O.T. D-22-491
 FOUND AND ACCEPTED A #4 BAR WITH "CA 980" CAP.
 LOCATION IS IN AGREEMENT WITH OKLAHOMA CERTIFIED
 CORNER RECORD FILED IN 2004 AND IS IN HARMONY
 WITH EXISTING IMPROVEMENTS. THE REFERENCE
 MONUMENTS WERE FOUND AND VERIFIED.

SECTION CORNER - O.D.O.T. D-22-492
 FOUND AND ACCEPTED A #4 BAR WITH "CA 980" CAP.
 LOCATION IS IN AGREEMENT WITH OKLAHOMA CERTIFIED
 CORNER RECORD FILED IN 2010 AND IS IN HARMONY
 WITH EXISTING IMPROVEMENTS. THE REFERENCE
 MONUMENTS WERE FOUND AND VERIFIED.

SECTION CORNER - O.D.O.T. D-22-495
 FOUND AND ACCEPTED A #4 BAR WITH "CA 980" CAP.
 LOCATION IS IN AGREEMENT WITH OKLAHOMA CERTIFIED
 CORNER RECORDS FILED IN 2004 AND IS IN LINE WITH
 EAST WEST FENCE. THE REFERENCE MONUMENTS WERE
 FOUND AND VERIFIED.

SECTION CORNER - O.D.O.T. D-22-500
 FOUND AND ACCEPTED A #4 BAR. LOCATION IS IN
 AGREEMENT WITH OKLAHOMA CERTIFIED CORNER
 RECORDS FILED IN 2010. THE REFERENCE MONUMENTS
 WERE FOUND AND VERIFIED. LOCATION SEEMS TO BE IN
 HARMONY WITH SURROUNDING IMPROVEMENTS. THE
 MONUMENT REFERENCED IN OKLAHOMA CERTIFIED
 CORNER RECORDS FILED IN 2004 WAS NOT FOUND.

SECTION CORNER - O.D.O.T. D-22-499
 FOUND AND ACCEPTED A #4 BAR WITH "CA 980" CAP.
 LOCATION IS IN AGREEMENT WITH OKLAHOMA CERTIFIED
 CORNER RECORDS FILED IN 2004 AND IS IN HARMONY
 WITH EXISTING IMPROVEMENTS. TWO OF THE REFERENCE
 MONUMENTS WERE FOUND AND VERIFIED.



SCALE:
1" = 500'

NOTE: REFERENCE'S SHOWN ARE NOT TO SCALE.

PLS	KH		OKLAHOMA DEPARTMENT OF TRANSPORTATION SURVEY DIVISION
DRAWN	CF,SK		
CHECKED	KH		
APPROVED	KH		
CREW	JH,SA,BH,DR	SWO 4600 (1)	
SURVEY DATA SHEET			
PROJECT NO. 17671(34)			SHEET NO. 336